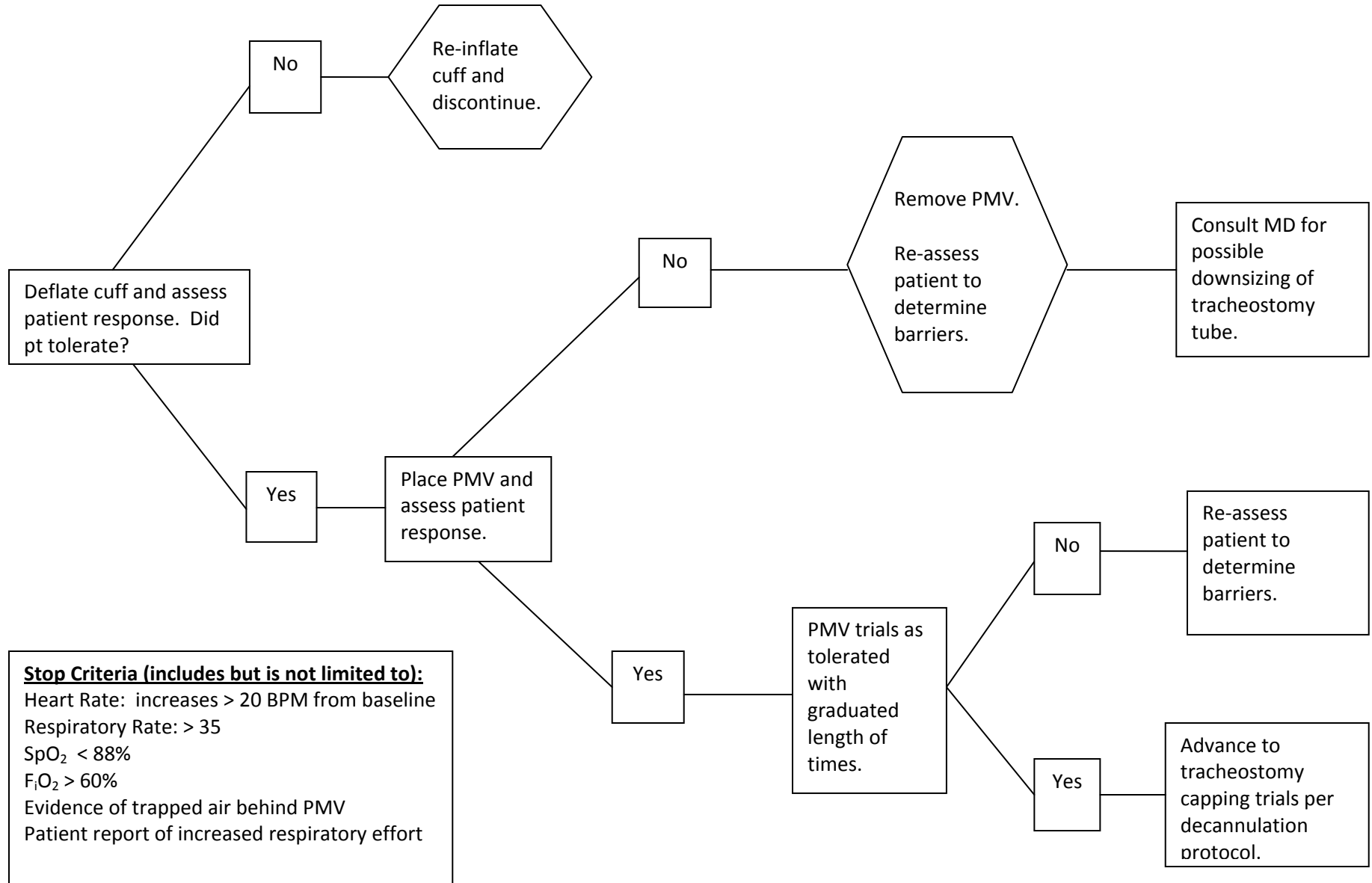
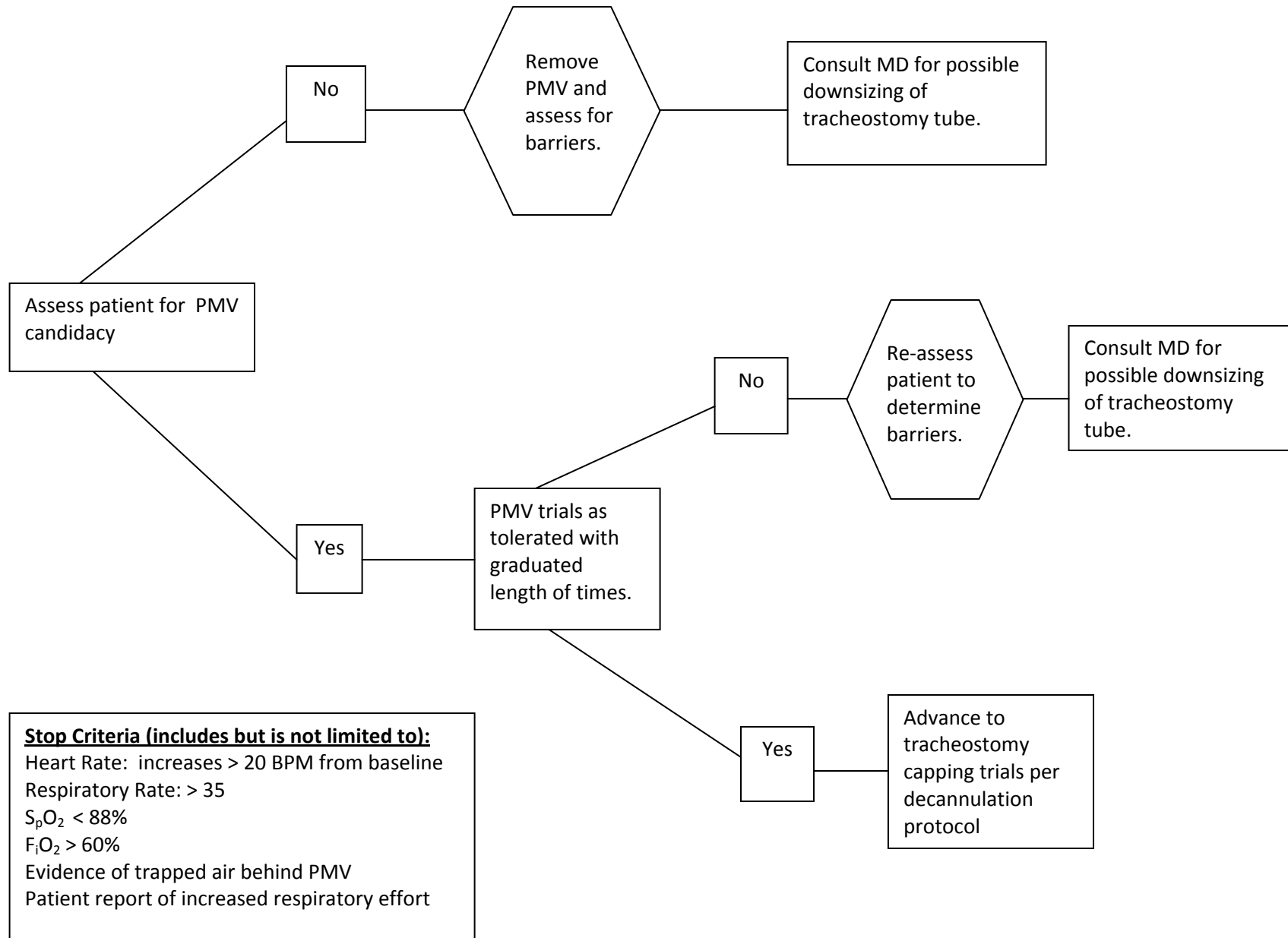


PMV Protocol for Cuffed Tracheostomy Tubes



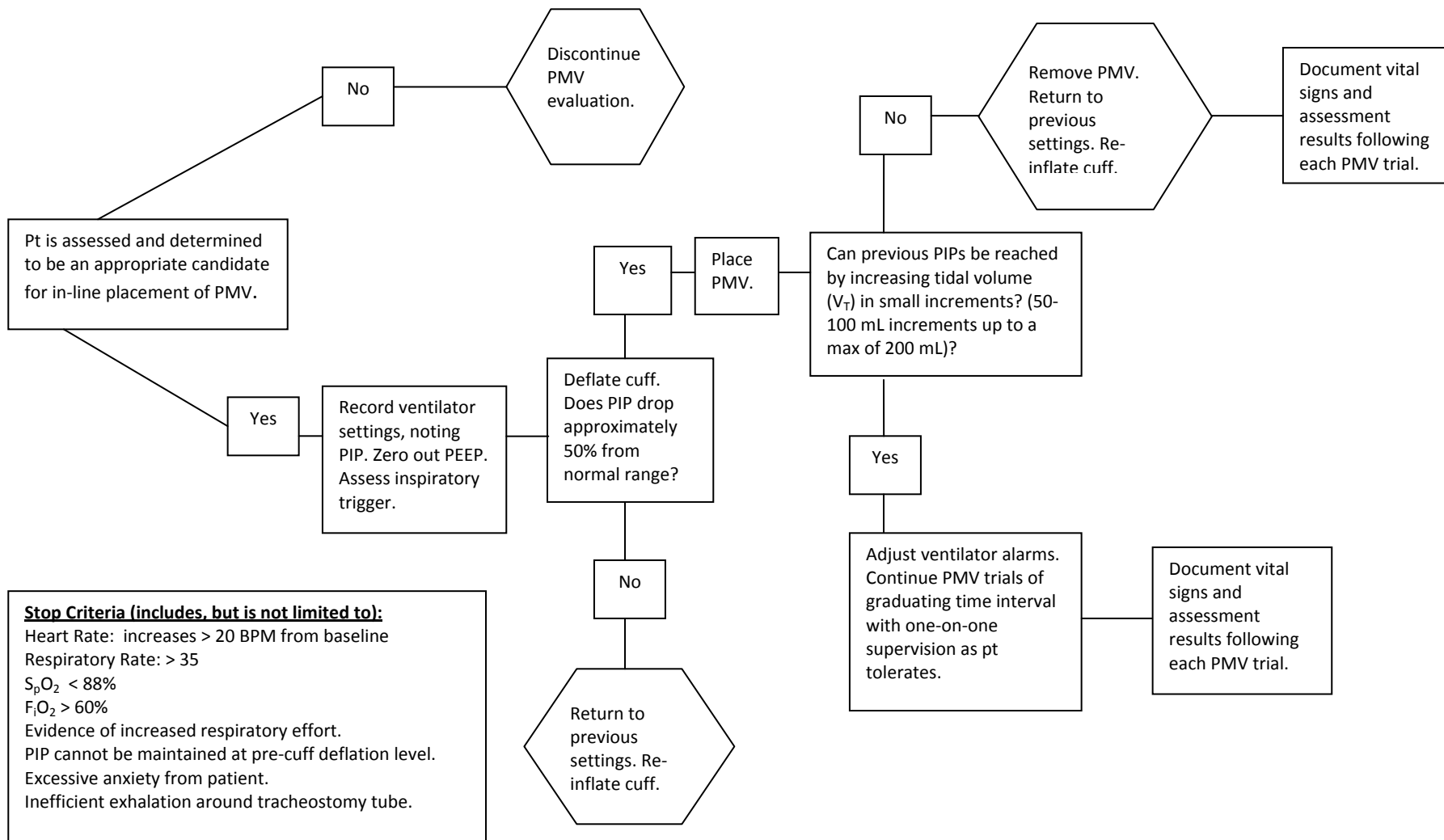
PMV Protocol for Cuffless Tracheostomy Tubes



PMV Protocol for Cuffed Tracheostomy Tubes for Patients on Ventilators

Candidates for In-Line Placement (includes but is not limited to):

- Awake and responsive.
- Stable medical condition.
- Does not have a foam cuff tracheostomy tube.
- PEEP < 10



Stop Criteria (includes, but is not limited to):

- Heart Rate: increases > 20 BPM from baseline
- Respiratory Rate: > 35
- S_pO₂ < 88%
- F_iO₂ > 60%
- Evidence of increased respiratory effort.
- PIP cannot be maintained at pre-cuff deflation level.
- Excessive anxiety from patient.
- Inefficient exhalation around tracheostomy tube.