

Next Round: Facing COVID-19 through Case Studies

Remote LIVE Webinar Presented by Passy Muir, Thursday, August 27th, 8:00 p.m. Eastern Time

As healthcare professionals, we face an unprecedented medical crisis with the pandemic that is COVID-19. This presentation will address stories related to what is happening for patients with tracheostomies and the healthcare professionals who take care of them now that we are further along in the pandemic. Clinicians will share what is happening with patients following the intubations that are occurring for longer periods of time than normal and what is the impact of the tracheostomies in this patient population. What are we doing differently? These healthcare practitioners will provide their first-hand experiences as to what patients with COVID-19 are needing with interventions as compared to critical care patients before COVID-19. What have we learned and what are we doing? What are some of the long-term considerations for these patients? Time will be provided for write-in questions.

Presenters & Panelists

Kristin King, PhD, CCC-SLP has been a speech-language pathologist in a variety of settings since 1995. She earned her PhD in Communication Sciences and Disorders from East Carolina University in 2008, specializing in cognitive-communication and swallowing disorders with medically complex patients of all ages with neuropathological disorders. She has trained SLPs in FEES and VFSS and developed programs for the management of patients on ventilators with use of Passy Muir® Valves and programs for assessment, treatment and management of patients with TBI. She has published peer-reviewed articles; is a recognized and invited speaker both domestically and internationally on the use of speaking valves, evaluation and treatment following TBI, and swallowing disorders; and served as an expert witness. She currently conducts research in these areas, while maintaining clinical skills through consultative services. She also participates in the development of multimedia education on topics relevant to speech language pathology, respiratory therapy, and nursing, among other clinical professions. She is the Vice President of Clinical Education and Research for Passy-Muir, Inc.

Speaker Disclosure Information:
Financial – Kristin King is the full-time Vice President of Clinical Education and Research for Passy Muir.
Non-financial - no relevant non-financial relationship exists.

Gail M. Sudderth, RRT has extensive experience in a variety of clinical settings as a respiratory therapist. As a lead therapist at a large teaching hospital, she worked with medically complex patients who required tracheostomy and mechanical ventilation, where her expertise was to manage patients who were considered difficult to wean. In her role, she worked closely with the speech-language pathologists and developed training competencies for suctioning and cuff management. Ms. Sudderth has developed and co-developed web-based presentations and on-site seminars for medical professionals who care for patients with tracheostomy. A recognized and invited speaker, she has presented in the US and internationally at hospitals and state and medical professional meetings on the topic of airway and ventilator management and the application of the PassyMuir® Valve. In addition, she has presented and published articles on the importance and development of multidisciplinary airway management teams. She is currently a full-time clinical specialist for Passy-Muir, Inc.

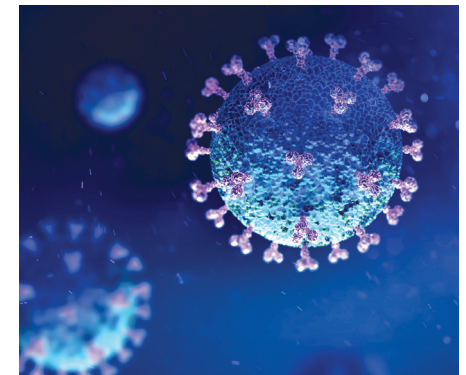
Speaker Disclosure Information:
Financial – Gail M. Sudderth is a full-time clinical specialist for Passy Muir.
Non-financial - no relevant non-financial relationship exists.

Kelsey Day, MS, CCC-SLP is an acute care Speech-Language Pathologist (SLP) who specializes in dysphagia management for the medically-complex, critically-ill, and tracheostomy-dependent populations. She now serves as the Lead SLP at California Hospital Medical Center, a trauma and stroke center in downtown Los Angeles. Kelsey is a Mentor for the Medical SLP Collective, guest lecturer at California State University - Fullerton, and a presenter of multiple continuing education courses. She is an invited speaker on several podcasts, including “Swallow Your Pride” and “Speech Uncensored,” and dedicates her career to the education of new clinicians.

Speaker Disclosure Information:
Financial – Kelsey Day is a speech-language pathologist for California Hospital Medical Center.
Non-financial - no relevant non-financial relationship exists.

Keri Danziger, MS, CCC-SLP is the Supervisor of Adult Inpatient Speech and Swallowing Services, at NYUMC. She is a founding member of the Trach Steering Committee at NYU, a member of the GTC, and has published and presented on tracheostomy management related to speech and swallowing at both the state and national level; recently, her talks are inclusive of her COVID experiences.

Speaker Disclosure Information:
Financial – Keri Danziger is a speech-language pathologist at NYU Langone Medical Center.
Non-financial - no relevant non-financial relationship exists.



This course is offered for 0.15 ASHA CEUs (Intermediate level, Professional area).

Passy-Muir, Inc. is an approved provider of continuing education through AARC and the California Board of Nursing. This course is offered for 1.5 contact hours of continuing education.

Content Disclosure: This presentation will focus exclusively on the no-leak, bias-closed swallowing and speaking Valve by Passy Muir and will not include information on other similar or related products.

