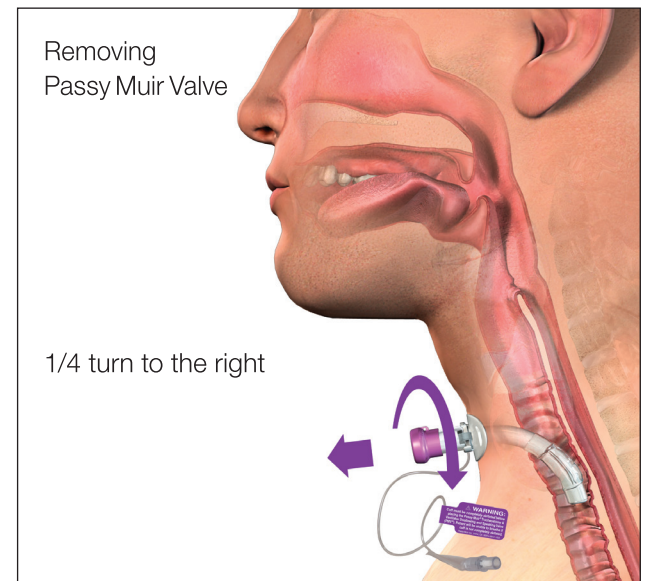
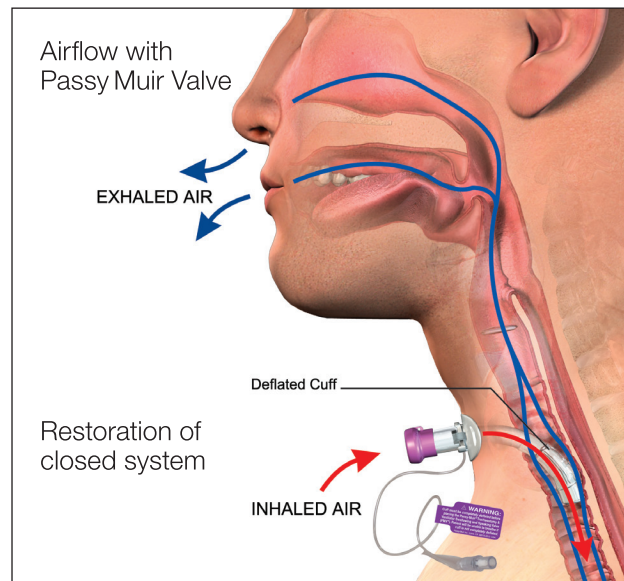
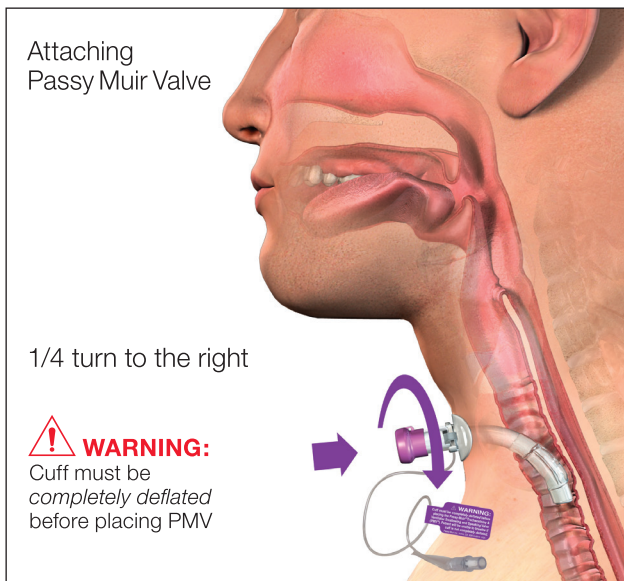
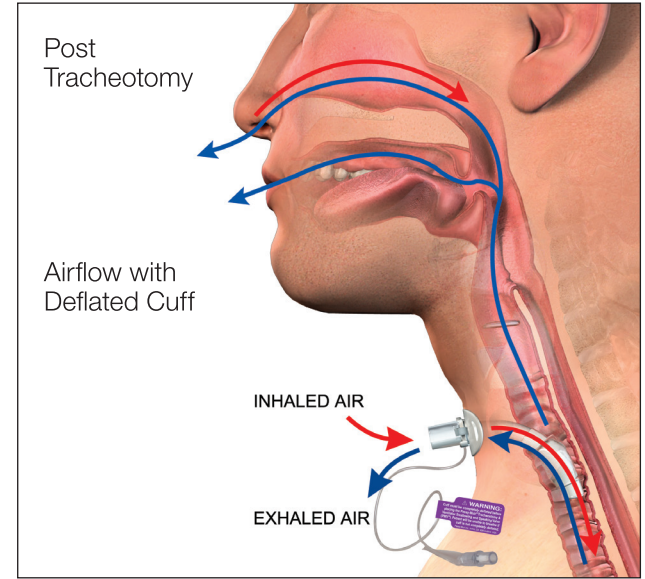
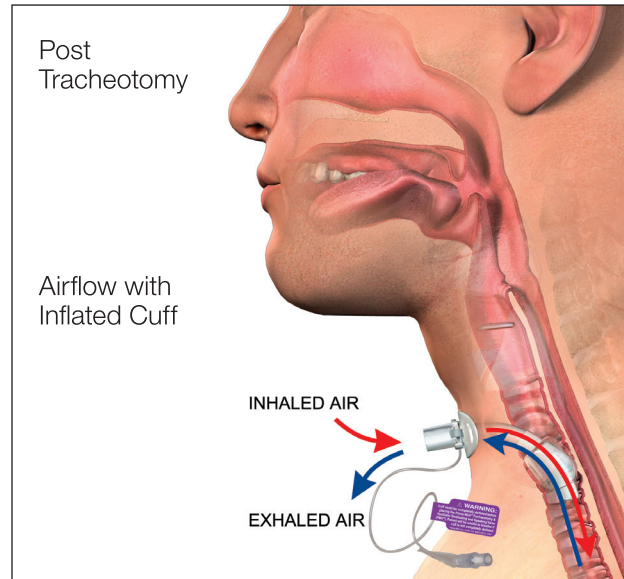
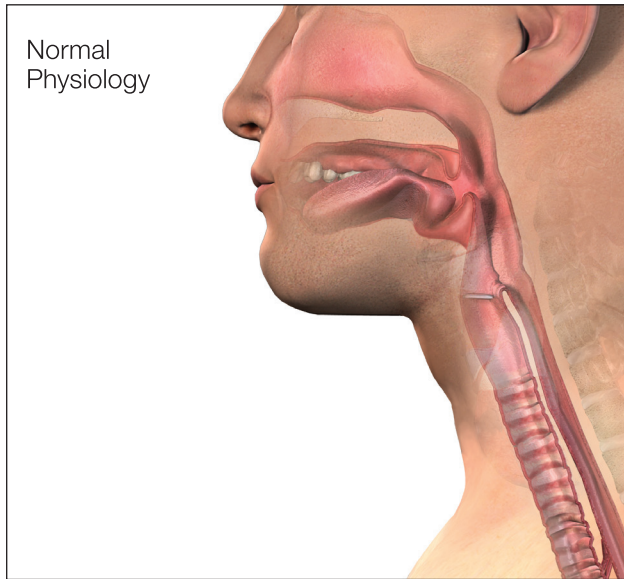


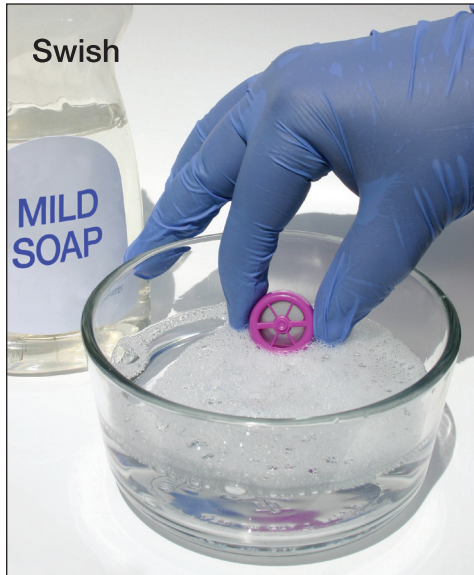


VISUAL GUIDE TO PASSY MUIR VALVE PLACEMENT & USE





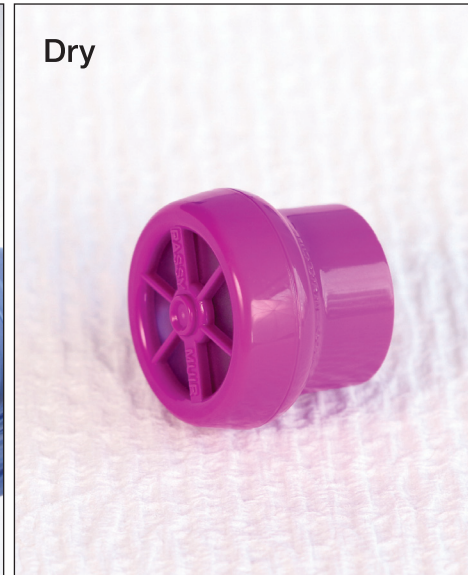
**VISUAL GUIDE TO CLEANING & CARE OF THE PASSY MUIR VALVE**



Swish



Rinse



Dry



Store

- Pour a few drops of mild, liquid, dishwashing soap (*soap with no lotion or fragrance*) into a cup.
- Add lukewarm (*not hot*) water.
- Swish the Valve in the water for about 10 seconds.

- Next, rinse the Valve thoroughly in lukewarm (*not hot*) running water.

- Allow the Passy Muir Valve ("PMV") to air dry on its side.

**NOTE:**

- Do not place in the storage container to dry.
- Do not use a blow dryer to heat or dry.

- After drying, place the Valve in the storage container and close the lid for storing.

For Additional Information & Frequently Asked Questions, Visit:

[www.passymuir.com/answers](http://www.passymuir.com/answers)

